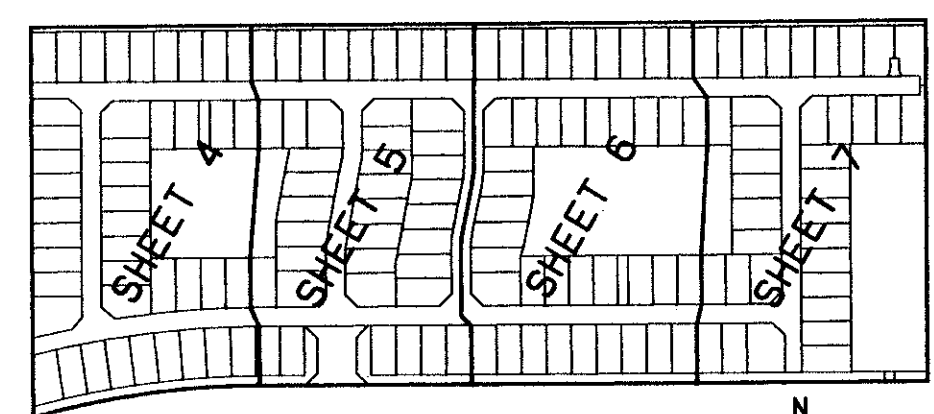


# JONES - PARCEL "C-1"

0683-005

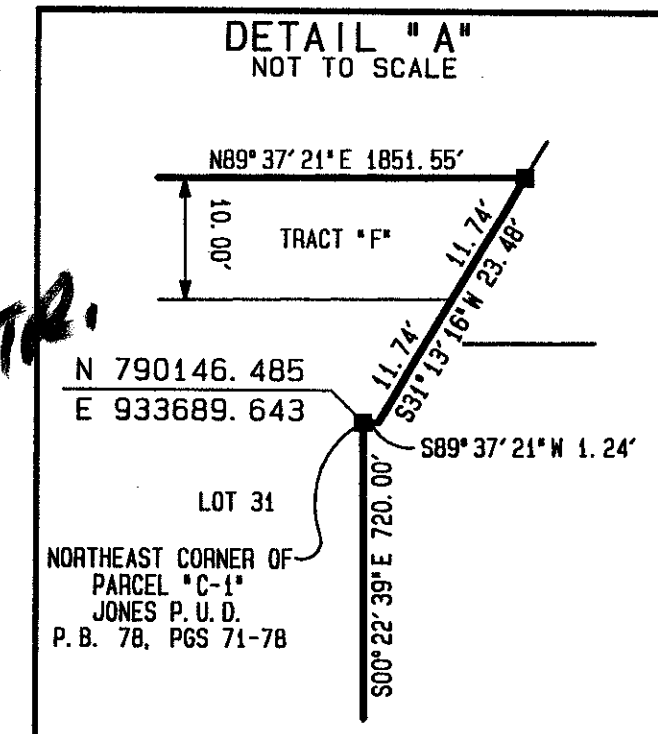
74

BEING A REPLAT OF PARCEL "C-1", TRACT "K-11" AND A PORTION OF TRACT "K-13", JONES P.U.D. AS RECORDED IN PLAT BOOK 78, PAGES 71 THROUGH 78 OF THE PUBLIC RECORDS OF PALM BEACH COUNTY, FLORIDA SITUATE IN SECTIONS 33 AND 34, TOWNSHIP 45 SOUTH, RANGE 42 EAST, PALM BEACH COUNTY, FLORIDA  
SHEET 3 OF 7

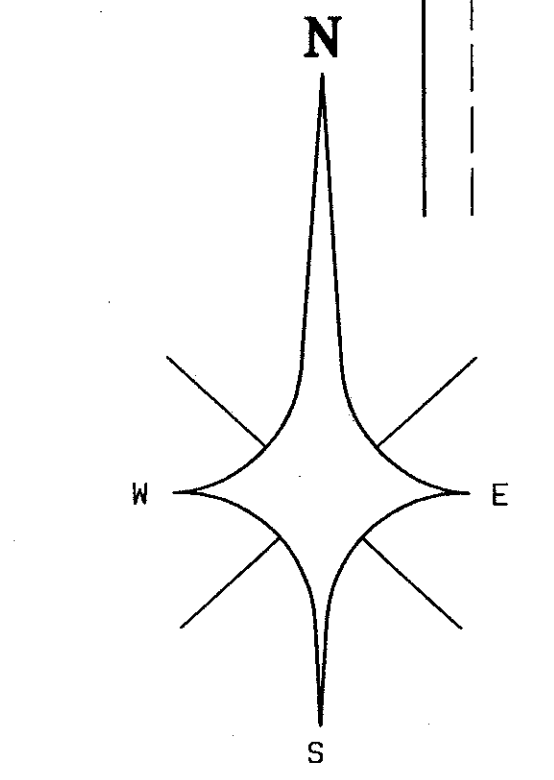


KEY MAP NOT TO SCALE

*PET. 95-19  
ALLOC. #0001  
NO SCHOOLS-RESTR.  
COVENANT  
5/3/3/K*



STATE OF FLORIDA }  
COUNTY OF PALM BEACH } SS  
THIS PLAT WAS FILED FOR  
RECORD AT \_\_\_\_\_ DAY OF  
THIS \_\_\_\_\_ AD 1997 AND  
DULY RECORDED IN PLAT BOOK  
\_\_\_\_\_ ON PAGES \_\_\_\_\_ AND  
\_\_\_\_\_  
DOROTHY H. WILKEN, CLERK  
CIRCUIT COURT  
BY: \_\_\_\_\_ DC



- LEGEND:**
- A = CENTRAL ANGLE/Delta
  - C = CENTERLINE
  - CH = CHORD
  - D.B. = DEED BOOK
  - D.E. = DRAINAGE EASEMENT
  - F.P. & L. = FLORIDA POWER AND LIGHT COMPANY
  - L = ARC LENGTH
  - L.A.E. = LIMITED ACCESS EASEMENT
  - L.M.A.E. = LAKE MAINTENANCE ACCESS EASEMENT
  - L.M.E. = LAKE MAINTENANCE EASEMENT
  - L.M.D.D. = LAKE NORTH DRAINAGE DISTRICT
  - N.R. = NON-RADIAL
  - N.T.S. = NOT TO SCALE
  - O.R.B. = OFFICIAL RECORDS BOOK
  - P.B. = PLAT BOOK
  - P.G. = PAGE
  - P.O.B. = POINT OF BEGINNING
  - P.O.C. = POINT OF COMMENCEMENT
  - R = RADIUS (RADIUS)
  - R.F. = RADIAL TO FRONT LOT LINE
  - R.R. = RADIAL TO REAR LOT LINE
  - R/W = RIGHT OF WAY
  - S.D.E. = SWALE DRAINAGE EASEMENT
  - U.E. = UTILITY EASEMENT
  - W.C. = WITNESS CORNER
  - Z.L.M. = ZERO LOT LINE MAINTENANCE EASEMENT
  - ⊙ = PERMANENT CONTROL POINT (PCP)
  - PCP #4380
  - = PERMANENT REFERENCE MONUMENT (PRM)
  - SET PRM #4380

SUBDIVISION # JONES  
BOOK 80 PAGE 74  
FLOOD ZONE A-H-B  
ZONING PDS  
ZIP CODE 33408  
P.O. NAME Jones

PROFESSIONAL SURVEYORS AND MAPPERS  
**ATLANTIC - CARIBBEAN MAPPING, INC.**  
3062 J06 ROAD - GREENACRES, FLORIDA 33467  
(561) 964-7884; FAX (561) 964-1969

0683-005

80/74